

UCPRPO PROJECT PRIORITIZATION BALLOT - Highway Project Criteria Division Projects (23 Projects)

SPOT_3_ID	Route	Description	Counties	VIABILITY SCORE MAX 75	P3 DIVISION DATA SCORE	Project Priority
H090420	Wilson	Northern Loop, NC 58 (Nash Street) To US 301 Interchange At SR 1436 (Rosebud Church Road). Multi-Lanes On New Location	WILSON	65	7.25	
H090421	Wilson	SR 1606 (Black Creek Road), US 264 Bypass To US 301-264 Alternate (Ward Boulevard). Widen to Multi-Lanes	WILSON	65	12.17	
H090468	Smithfield	SR 2403 (Component Drive Extension). Peeden Street To US 301 (Bright Leaf Boulevard). Construct Two Lanes On Multi-Lane Right Of Way, New Location	JOHNSTON	15	25.51	
H090874	Buffalo Rd	Widen to three (3) lanes from US 70 to SR 1934 (Old Beulah Rd.) in Johnston County	JOHNSTON	65	8.33	
H090878	40001501(Swift Creek Parkway),	Roadway improvements that connect US 70 Bus to US 301 in Johnston County	JOHNSTON	20	12.26	
H090879	SR 1124	Interchange development at US 264 and Massey Rd. in Nash County	NASH	15	3.42	
H090880	SR 1151	Interchange development at US 264 and Bryantown Rd. in Nash County	NASH	15	8.87	
H090881	SR 2302 (Ricks Rd.)	Widen to three (3) lanes from US 70 to US 301 in Johnston County	JOHNSTON	65	10.50	
H090882	SR 1207 (McNair Rd.)	Widen McNair Rd. to three (3) lanes from US 64 to US 64 Alt. in Edgecombe County	EDGECOMBE	65	11.90	
H090883	SR 1608	Widen SR 1608 from US 301 to Black Creek Rd in Wilson County	WILSON	65	2.99	
H090889	SR 1327 (London Church Rd)	Widen London Church Rd from Herring Ave to Lake Wilson Rd	WILSON	65	9.15	
H090890	SR 1326	Widen Corbett Ave from Raleigh Rd to London Church Rd	WILSON	15	9.68	
H090891	SR 1927	Widen to three (3) lanes from I-95 to Webb St in Johnston County	JOHNSTON	65	9.68	
H090892	SR 1163 (Downing St)	Widen from Forest Hills to US 264	WILSON	65	7.54	
H090893	SR 1309(Bloomery Rd.), SR 1382(Packhouse Rd.)	Bloomery Rd and Packhouse Rd Widen from NC 58 to US 264 Alt in Wilson County	WILSON	65	10.72	
H090895	SR 1900(Noble St)	Expand to three (3) lanes from SR 1003 to US 301	JOHNSTON	65	11.81	
H111081	US 64 Bus - Rocky Mount MPO	Widen from 2-Lane to 4-Lane Divided Road	NASH	15	In Progress	
H111272	Old Stantonsburg Road (SR 1602)	Upgrade existing facility to boulevard - 4D - from Old Black Creek Road (SR 1606) to US 264 Interchange	CITY OF WILSON	65	4.50	
H112119-B	Booker Dairy Rd Extension	Extension Of SR 1923 (Booker Dairy Road), US 70 Business West Of Smithfield To US 301 (Bright Leaf Boulevard). Two Lanes, Part On New Location - SR 1003	JOHNSTON	65	14.55	
H111282	CITY OF WILSON SIGNAL SYSTEM	Construct Citywide signal system in City of Wislon	CITY OF WILSON	65	8.20	
H140525	SR 1913	Widen road with center turning lane.	Johnston	65	In Progress	
H141500	New Route	New highway connecting US 64 Bus to Old White Oak Rd for Economic Development.	NASH	15	In Progress	
H141707	SR 1501 (Siwft Creek Rd)	Add turn lanes at Johnston County Airport	JOHNSTON	15	In Progress	

, 2014.

PRINT TAC MEMBER NAME

Signature, TAC MEMBER

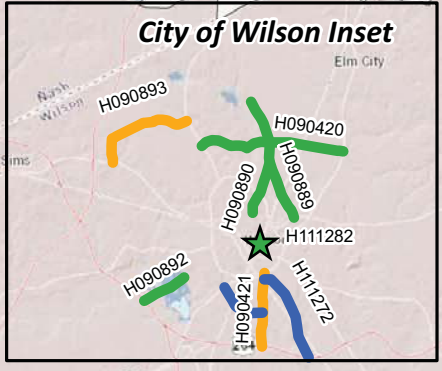
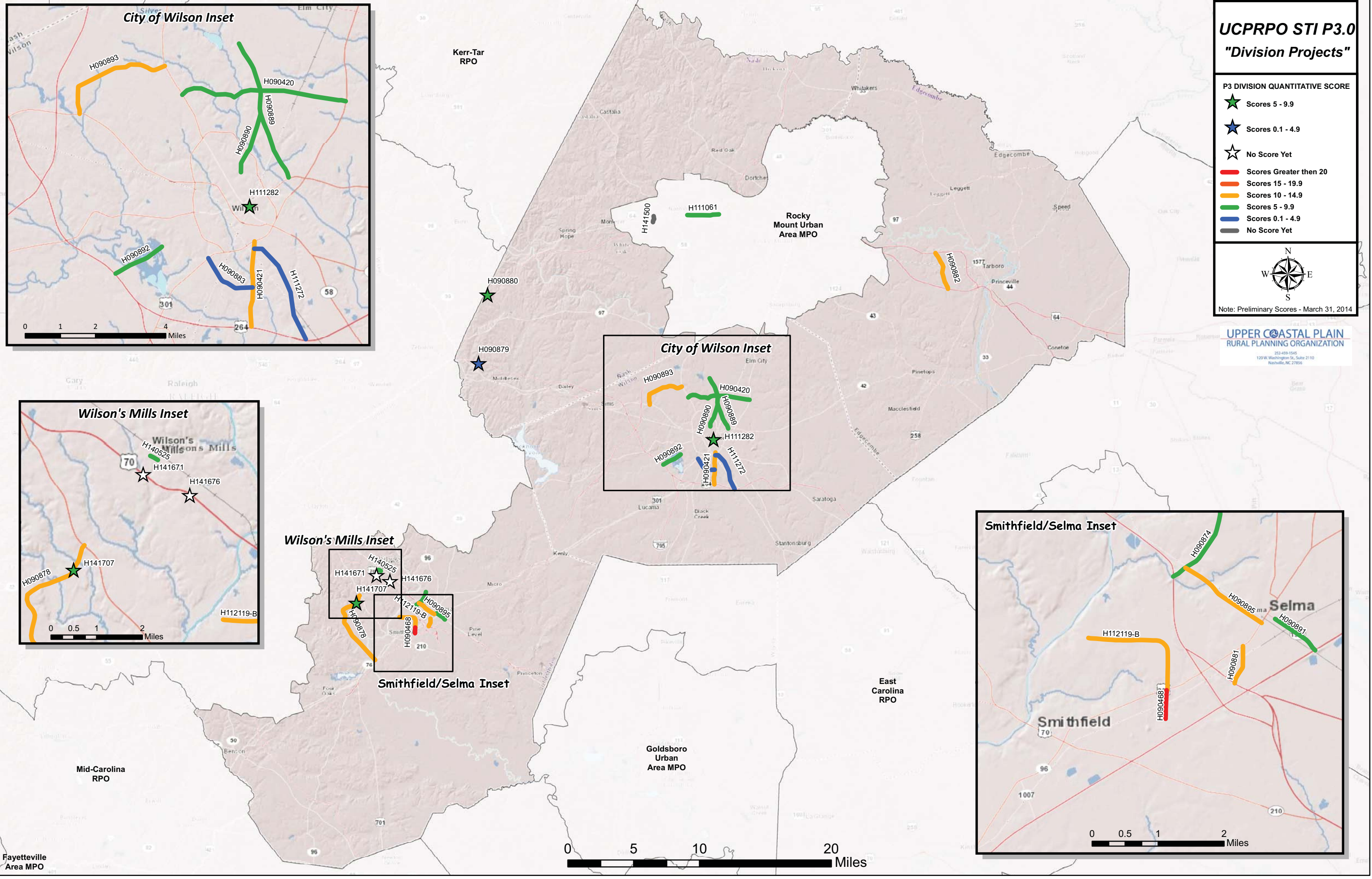
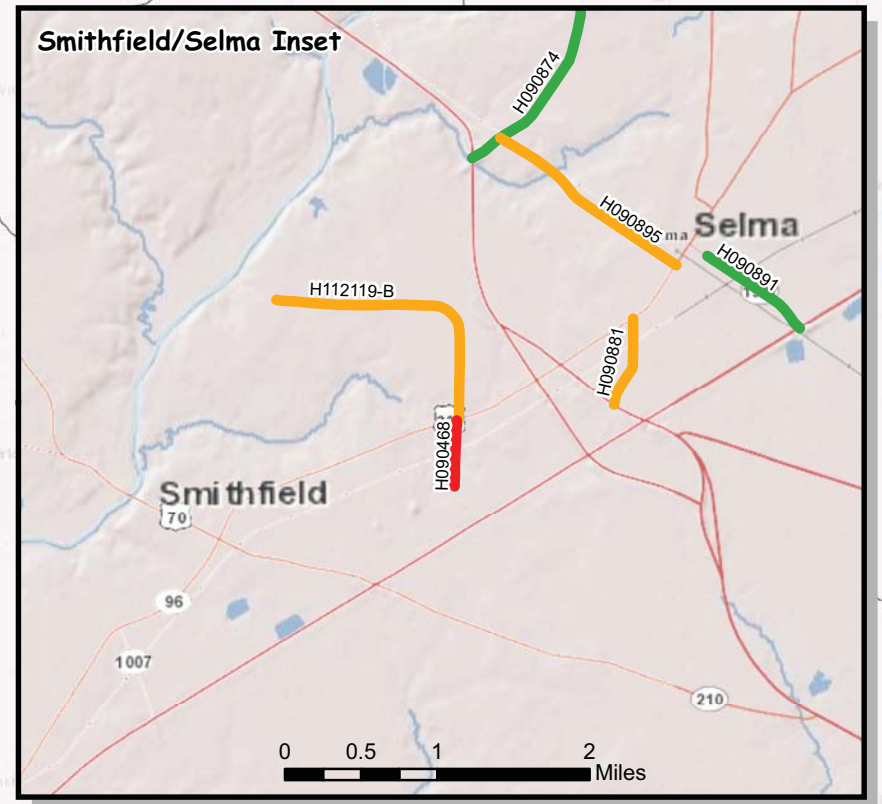
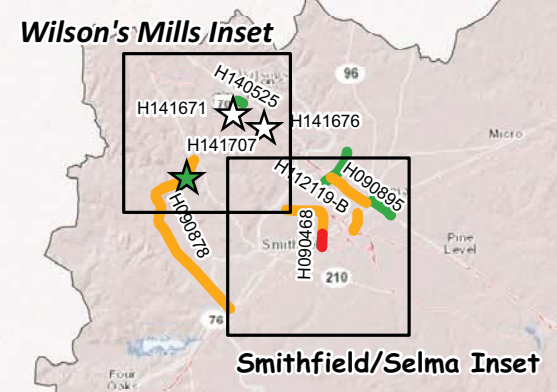
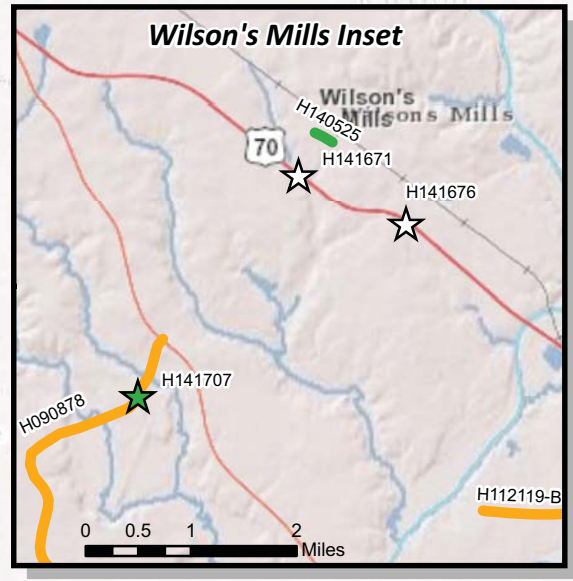
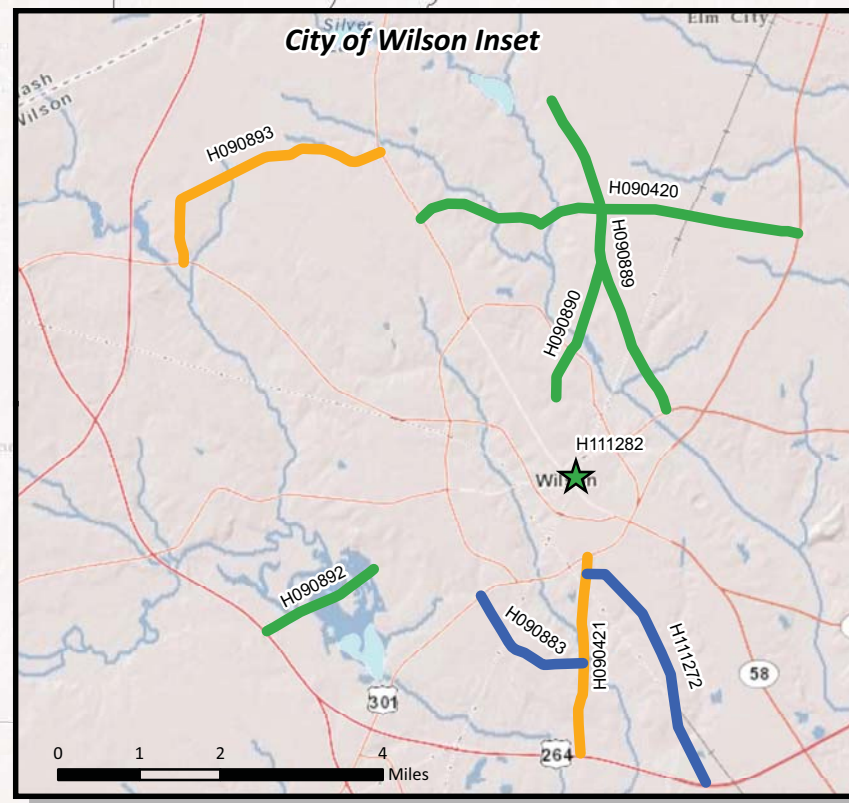
UCPRPO STI P3.0
"Division Projects"

- P3 DIVISION QUANTITATIVE SCORE**
- ★ Scores 5 - 9.9
 - ★ Scores 0.1 - 4.9
 - ☆ No Score Yet
 - Red line Scores Greater than 20
 - Orange line Scores 15 - 19.9
 - Yellow line Scores 10 - 14.9
 - Green line Scores 5 - 9.9
 - Blue line Scores 0.1 - 4.9
 - Grey line No Score Yet



Note: Preliminary Scores - March 31, 2014

UPPER COASTAL PLAIN
RURAL PLANNING ORGANIZATION
 252-499-1545
 120 W. Washington St., Suite 2110
 Nashville, NC 27856



Fayetteville Area MPO

Mid-Carolina RPO

Kerr-Tar RPO

Goldsboro Urban Area MPO

East Carolina RPO